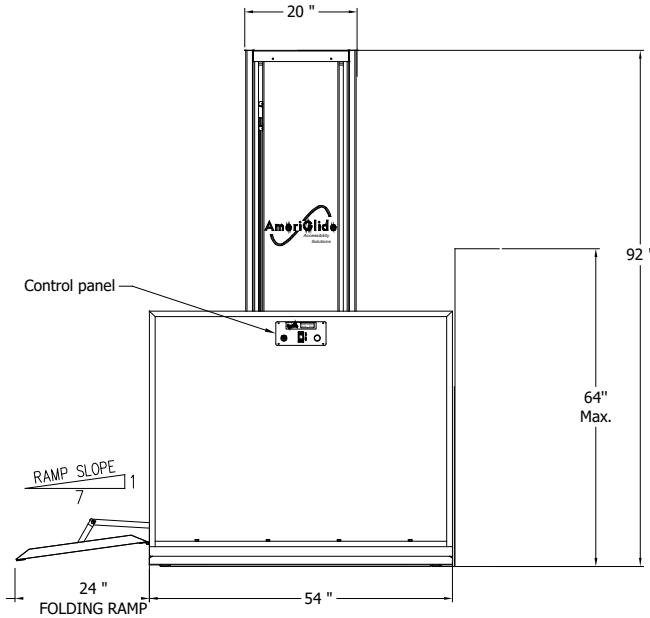
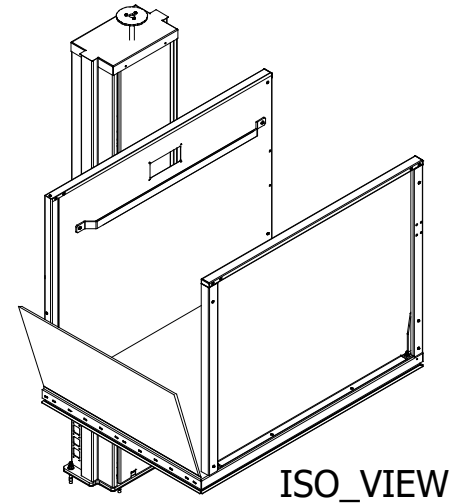


NANO_36X54
PLAN VIEW

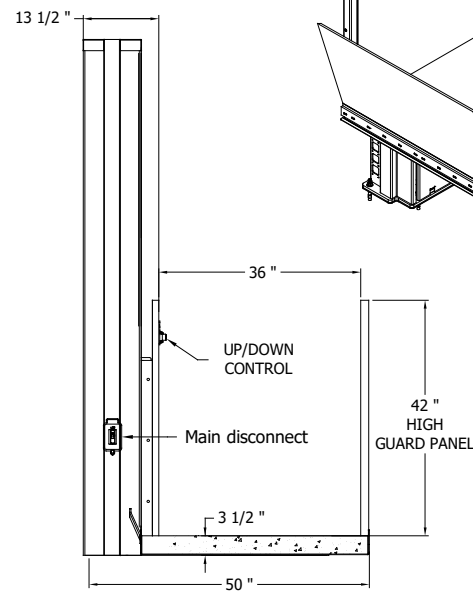


NOTE:

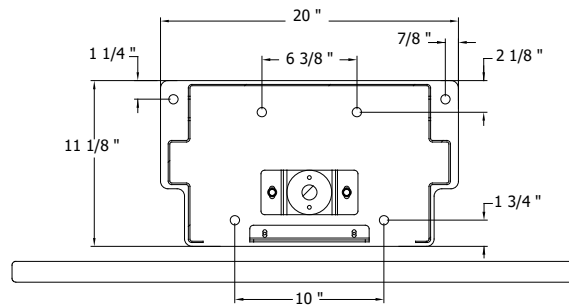
- 1 -For Platform loads see page 4
- 2- Upper landing door/gate and interlock to be installed by elevator contractor
- 3- All work and materials must comply to local laws and regulations.
- 4- Install in accordance with A117.1 2009
- 5- Install in accordance NFPA70
- 6- This vertical platform lift is designed and built by ameriglide in accordance with the followings codes:
-A18.1 2014 (See A18.1 Table 1.5-1).
-A117.1 2009
-NFPA 70 2017



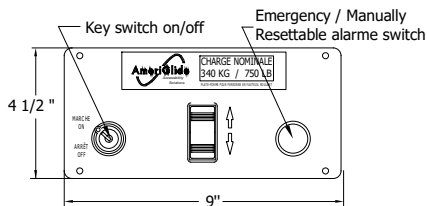
DETAIL A
FRONT VIEW



DETAIL B
SIDE VIEW



ANCHORAGE



CONTROL PANEL

APPROVAL DRAWING	
CHOICE (✓)	APPROVED
	APPROVED AS NOTED
	RESUBMIT AS NOTED
SIGNATURE	DATE
SIGN AND RETURN	

24DC, 60Hz 120V 20A
Residential unit

**CONFIGURATION
DETAILS**

Code:
A18.1 2014

GUARD PANEL:
42" HEIGHT

SAFETY:
± 1/16"

DRAFTER:
M. Debusschere

PROJECT:

--

No DRAWING:

NANO MODEL

Status:

APPROVAL

No SHEET:

1/5

Revision:
1